

SAUL Extension (SAUL2EXT)

Final Report Overview

Martin Jones
Groundwork London



The SAUL project

- **Sustainable & Accessible Urban Landscapes**
- **Interreg IIIB North West Europe**
- **Jan 2003 – June 2008**
- **Total Budget €23.4M**
- **Total ERDF €10.7M**

SAUL Partners/Regions

Planungsgruppe
agl

MAYOR OF LONDON



SAUL Key Features

- **New Urban Landscapes**
- **Transnational demonstration projects**
- **Involvement of citizens**
- **Partnership working**
- **A Learning project – Joint Planning Groups**
- **Influencing European planning systems**

SAUL2EXT Objectives

- 1. To illustrate the significance of new urban landscapes to the economic vitality of city regions, engaging businesses in partnerships with public authorities, employees and citizens to recognise the potential impact of current and planned projects.**
- 2. To demonstrate the potential value of new urban landscape projects in building social cohesion in city regions, promoting well-being by empowering citizens of all age groups to take responsibility for their future environment.**

SAUL2EXT Final Report

- **Third part of the SAUL series**
- **Summary of transnational demonstration projects**
- **Jayne Engle-Warnick peer review**
- **Kathrin Feigs peer review**
- **CD-ROM with more detailed Regional Reports**

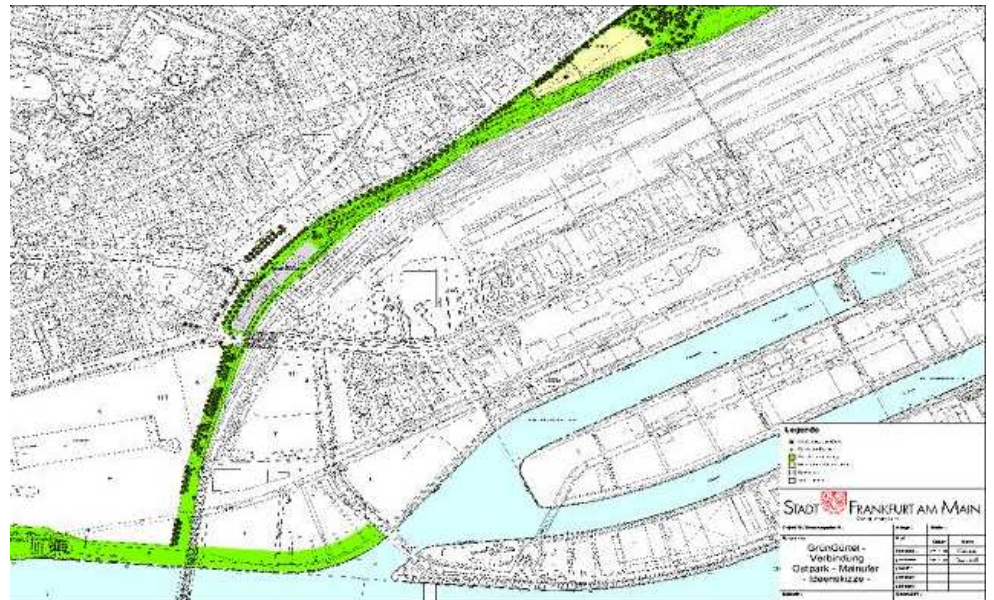
SAUL2EXT Final Report

Three Themes

1. **Bridging Gaps**
2. **Progressing Forward while Respecting the Past**
3. **Creative Approaches and Poetic Planning Methods**

1. Bridging Gaps

Frankfurt – The Landscape Gap









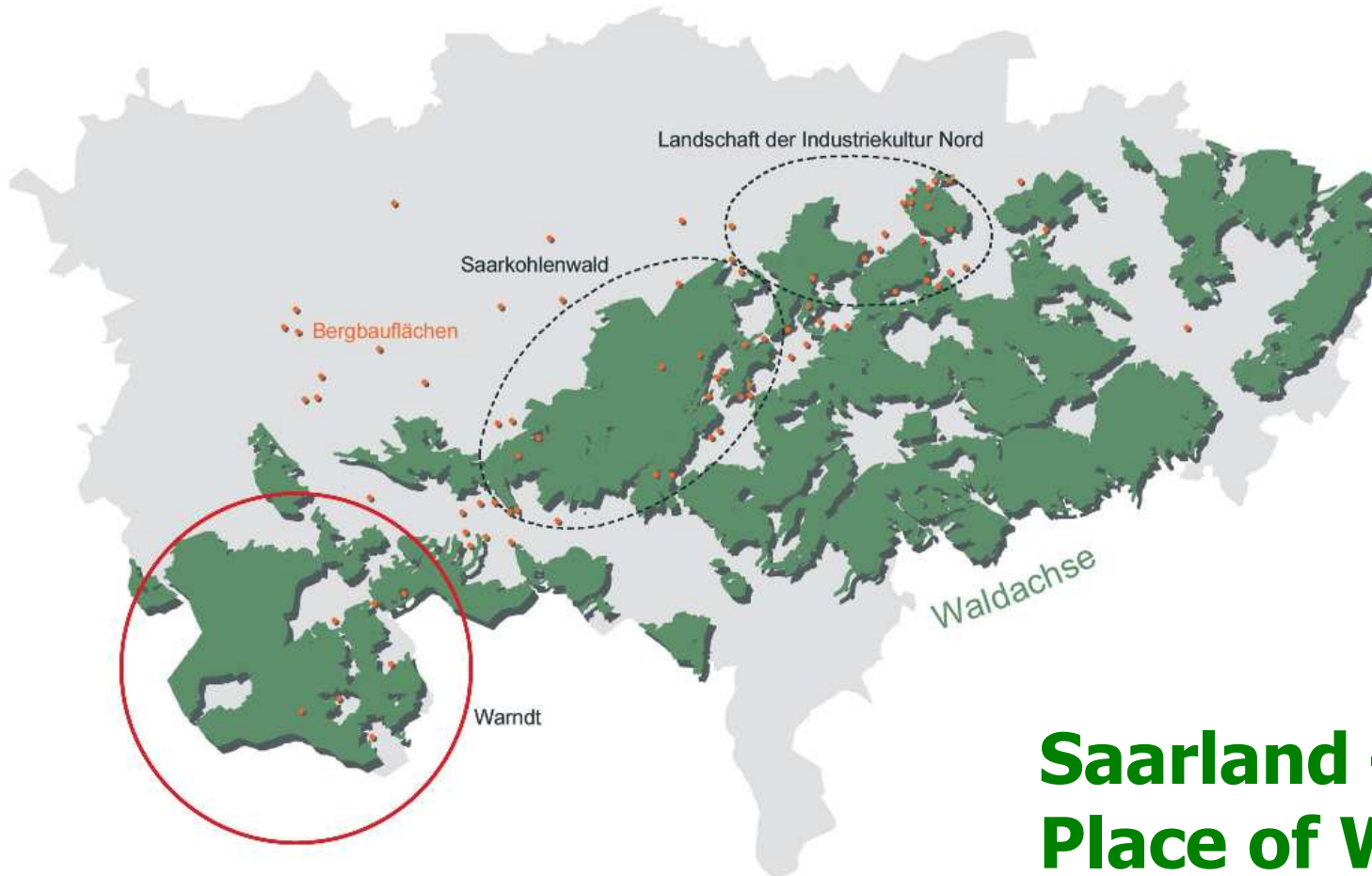
1. Bridging Gaps

Amsterdam Noorderpark – the Knowledge Based Economy

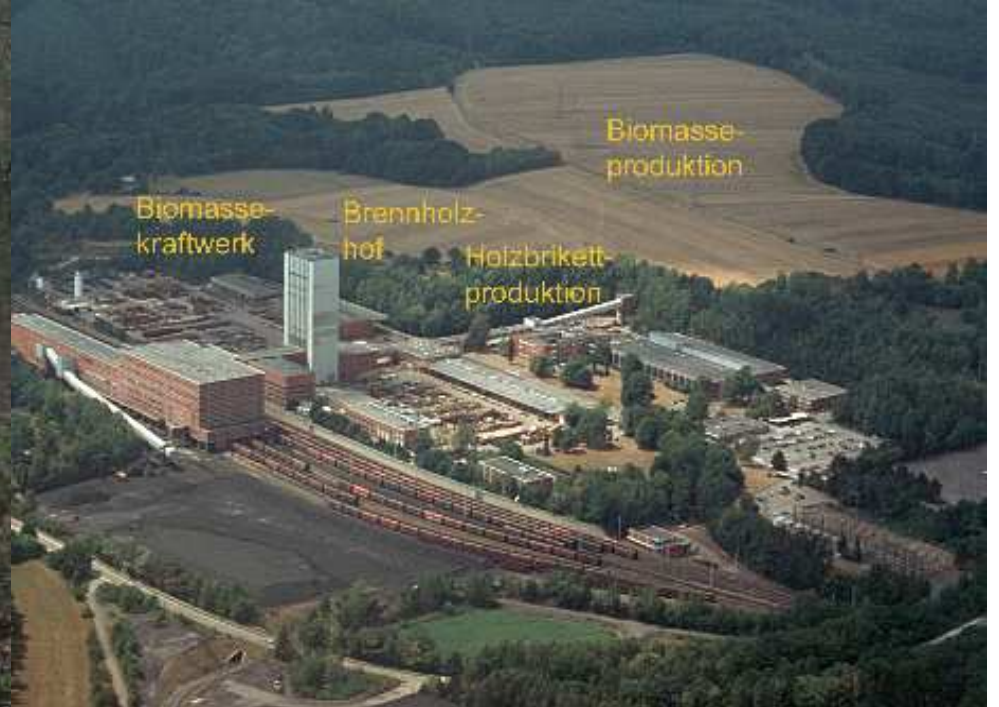




2. Progressing Forward

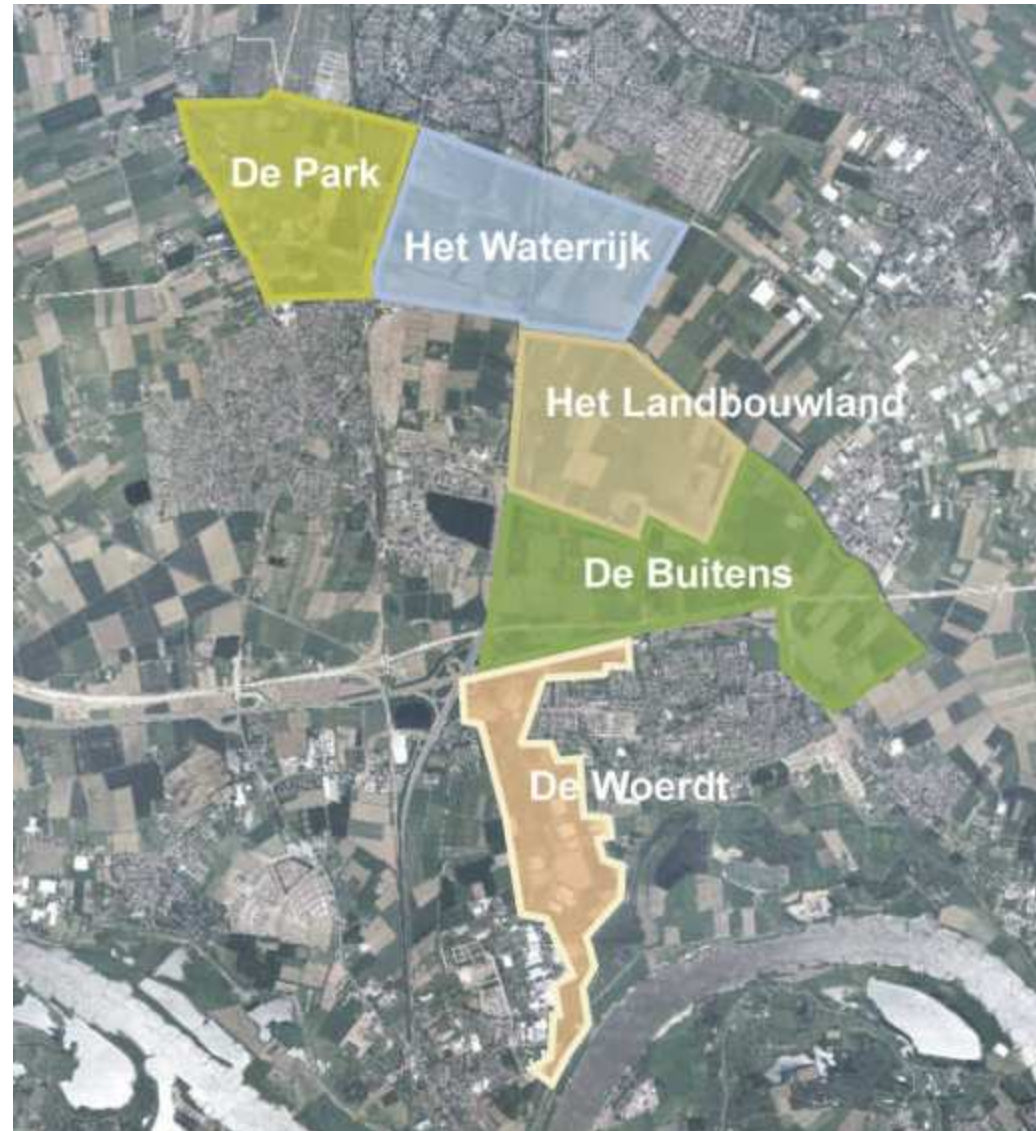


**Saarland – A
Place of Work
and Production**



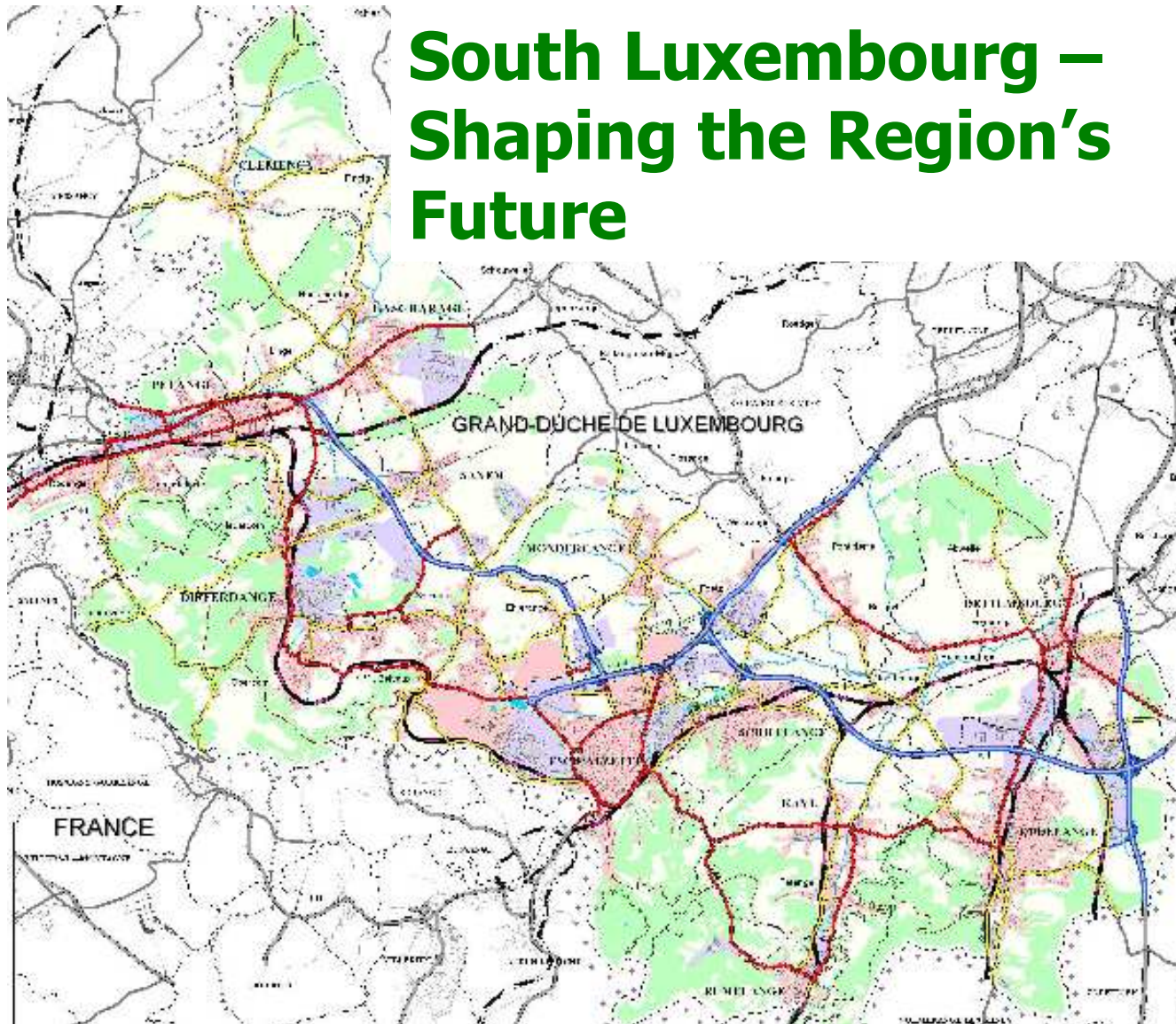
2. Progressing Forward

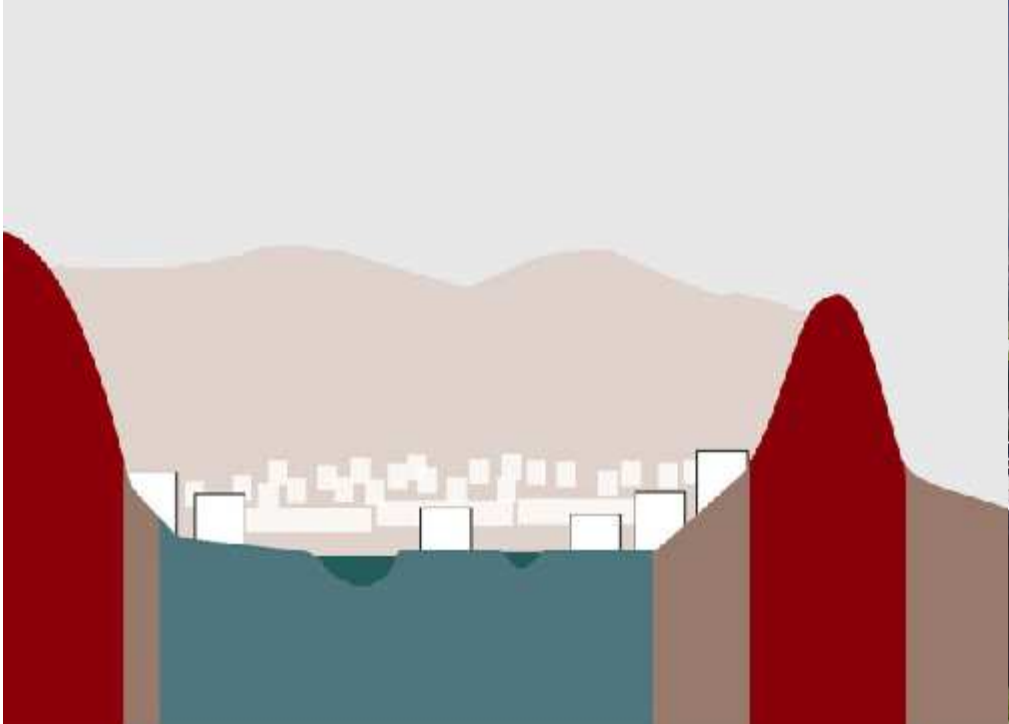
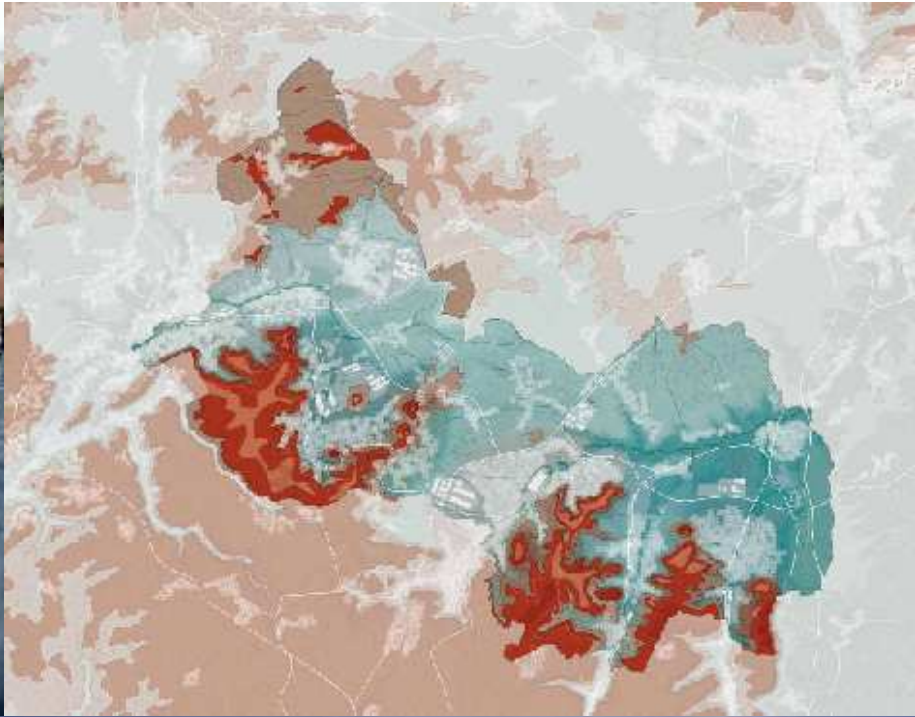
**Arnhem /
Nijmegen –
Park
Lingezege
Ambitions
for the
Future**



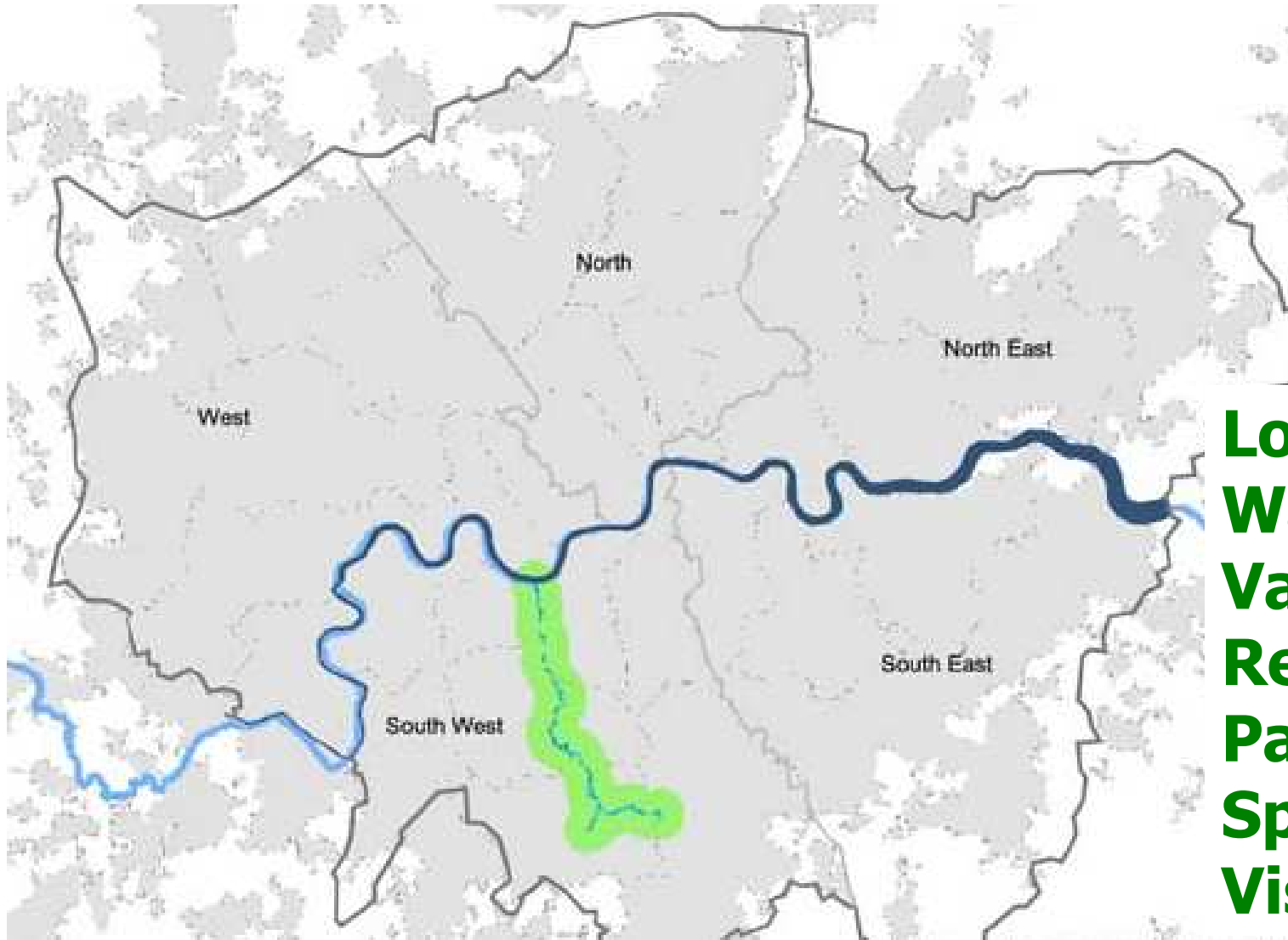
3. Creative Approaches

South Luxembourg – Shaping the Region's Future





3. Creative Approaches



**London -
Wandle
Valley
Regional
Park
Spatial
Vision**