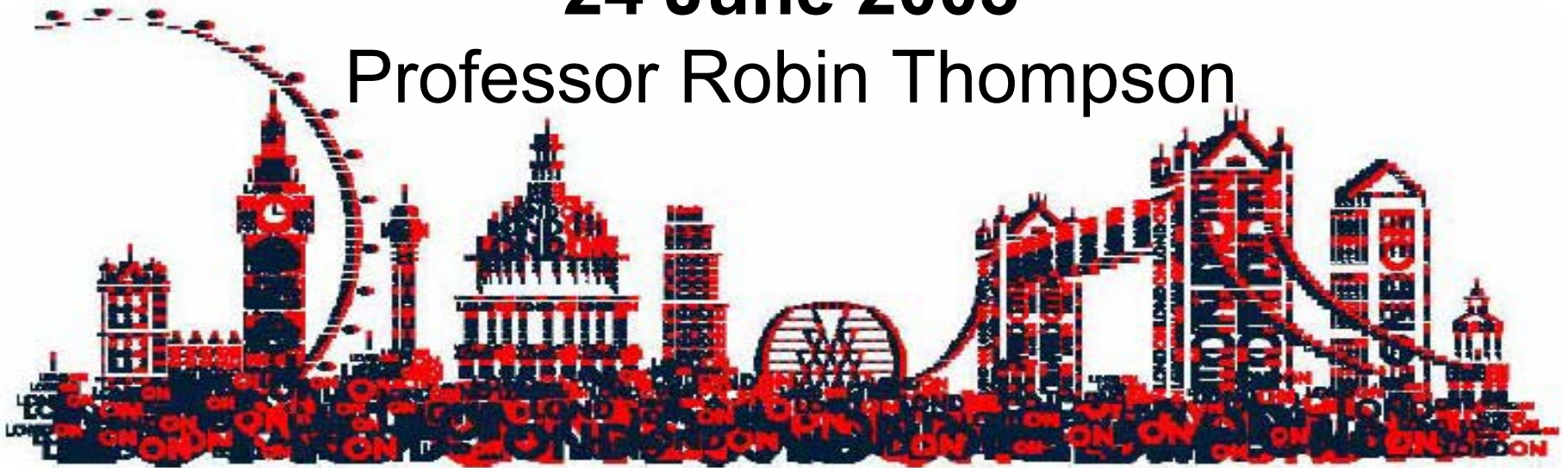


THE DRAFT LONDON PLAN

SAUL Launch Conference
24 June 2003

Professor Robin Thompson



PURPOSE OF THE LONDON PLAN

- **Strategic plan for the next 15 years**
- Integrate **social, economic and environmental** policies
- **Integrate land use and transport**
- Interpret the spatial implications of the **Mayor's other strategies**
- London's **place in the world**
- ***A new kind of plan***

Better for people to live in



More prosperous



More equitable



Easier to get around



More attractive and greener



Less wasteful



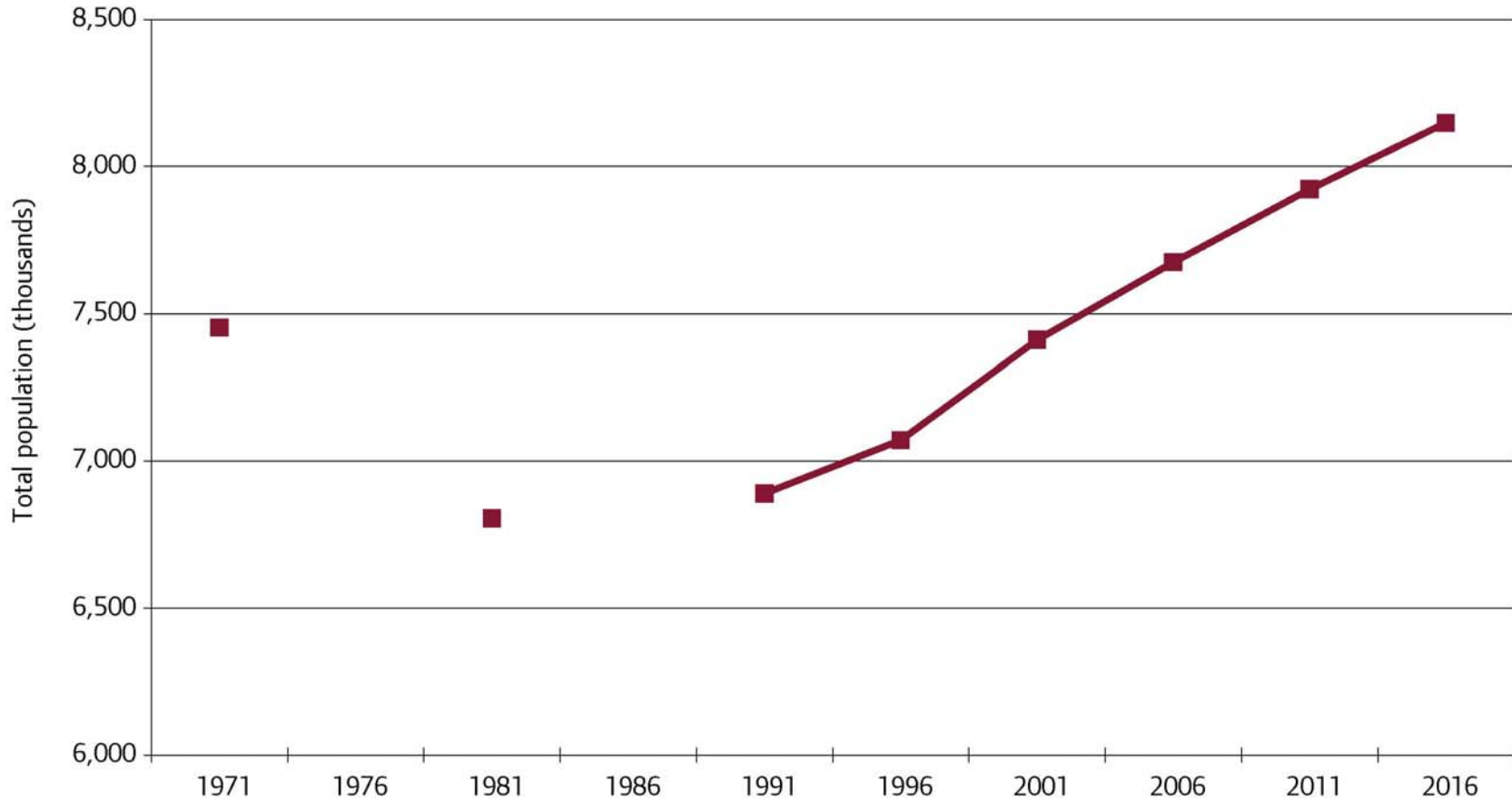
The Mayor's Vision

To develop London as an exemplary sustainable world city, based on three interwoven themes:

- Strong, diverse economic growth
- Social inclusion
- A fundamentally better environment
and use of resources

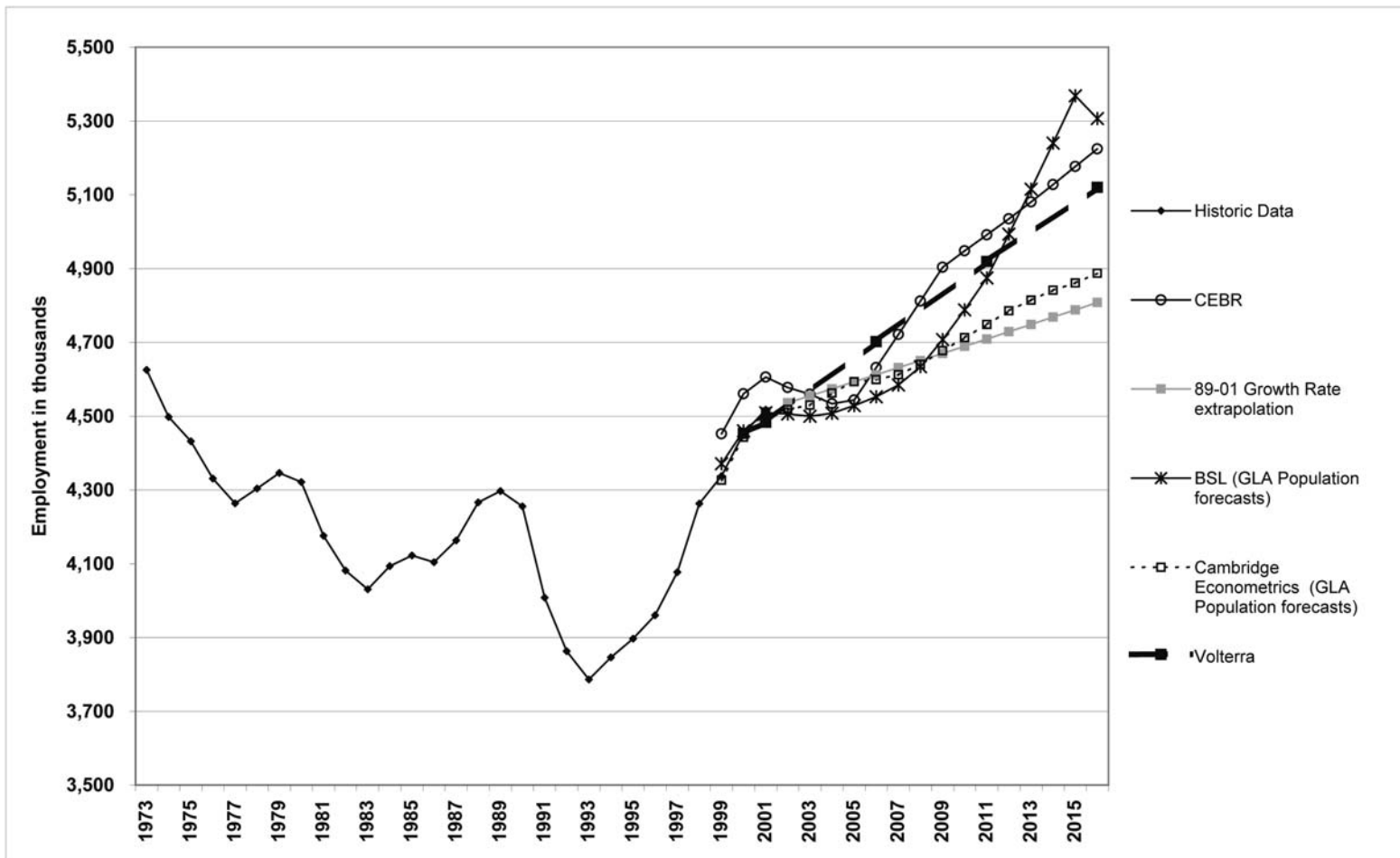


Projected Population Growth, London 1971-2016



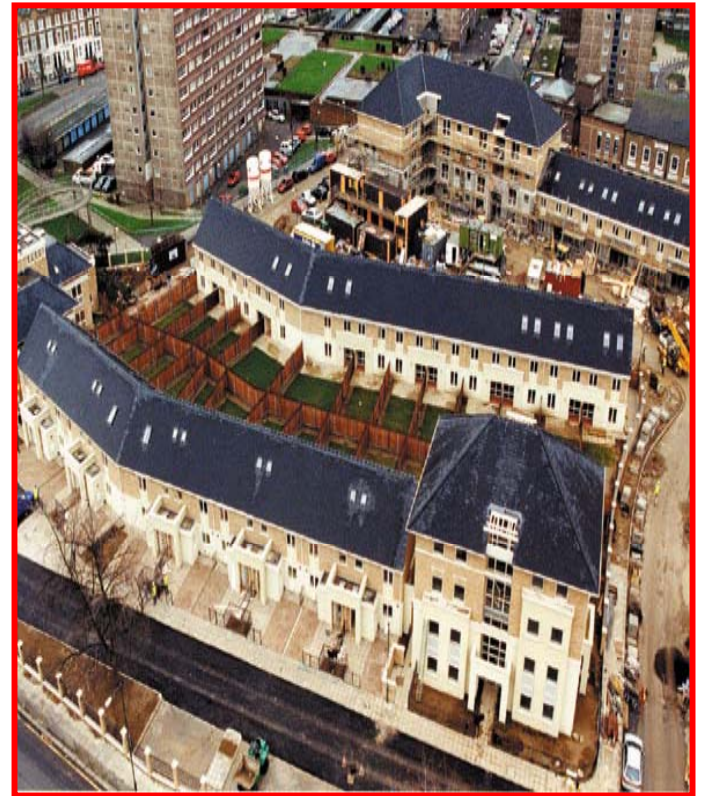
Long Run Employment Change, London 1973 - 2016

Projected Growth 2001- 2016 – 636,000 net; 850,000 gross



4 WHAT ARE THE POLICY IMPLICATIONS FOR LONDON?

- A compact city
- Strategic policy responses



More attractive, well designed and green public realm



- A rigorous protection of existing open space
- High design standards – sustainable construction
- New policy on protecting views

Make the most sustainable and efficient use of space – and resources

- Sustainable energy, water, waste policy
- Relationship between development and transport
- Economic and social sustainability



Burgess Park



THE DRAFT LONDON PLAN

